



Masonry Heater Kits, Options & Pricing

2026 Product Guide

Solid Rock Masonry Heat has been designing and building masonry heaters since 2003, with a third-generation masonry background spanning over 45 years. We bring that depth of hands-on experience to every kit we design, every heater we build, and every client we work with. We are fully insured, including Errors and Omissions coverage for design and manufacturing, so you can move forward with confidence.

Our SR Core systems are designed around the best European masonry heating traditions, drawing from Russian, Finnish, Austrian, German, and Swedish designs and modularizing them into systems that don't require hundreds of saw cuts. Every kit comes with what many clients tell us are the most detailed and clearly written course-by-course instructions in the industry.

All SR Doors and SR Core are made in the USA with materials from the USA and Canada, with the exception of pyroceramic glass sourced from Germany. We are centrally located in Duluth, MN for efficient shipping to all regions of the United States and Canada.

Eric Moshier | Solid Rock Masonry Heat

218-343-2978 | eric@solidrockmasonry.com | solidrockmasonry.com

5347 Howard Gnesen Road, Duluth, MN 55803

What You Will Find in This Guide

How our kits are built: Hybrid vs. Cast Core systems

Design and venting configurations and how we select the right one for your project

Bake oven options: Black (direct fire) and White (indirect fire)

Heated bench configurations and efficiency

Hot water loop provisions

Specifications and dimensions for all standard models

Cook stove and masonry heater cook stove combination units

2026 pricing for all models and options

Shipping information

Foundation and clearance requirements



The SR Core System: Two Ways to Build

Every SR masonry heater is built around one of our two core systems. Both deliver the same radiant heat performance and support the same door and option selections. The difference is in the materials, build time, and kit cost.

SR Hybrid Core System

The Hybrid uses approximately 230 firebricks as its primary structural material, with 18 cast refractory slabs for spanning openings, oven components, and draft channels. Firebrick is a more economical material than cast refractory, which is why Hybrid kits are priced lower.

The tradeoff is build time and skill. Laying 230 firebricks accurately, including cutting brick to fit, adds roughly a full day or more to the build compared to the Cast Core. If you are comfortable with brickwork and want to manage kit cost, the Hybrid is a solid choice.

Best for: Experienced builders, owner-builders with masonry skills or the willingness to learn, or projects where kit cost is the primary consideration.

SR Cast Core System

The Cast Core uses only about 40 firebricks to line the replaceable firebox, with approximately 55 precision refractory castings making up the rest of the system. The castings are shaped and sized to fit together with minimal cutting.

This makes the Cast Core the fastest and least technically demanding system to build. If you are new to masonry or working with a contractor without a masonry background, the Cast Core is the better path. The higher kit cost is typically offset by reduced labor time.

Best for: First-time builders, contractors without masonry backgrounds, or any project where build speed and simplicity matter most.

What Every Kit Includes

Whether you choose Hybrid or Cast, every SR Core kit ships with all materials needed to build the heater core: firebrick, refractory mortar, refractory slabs, insulation, gasketing, expansion materials, and your SR doors. We also include our full course-by-course 2D SketchUp blueprint drawings in PDF format, 3D elevations, and custom architectural facade design services through our AIA-certified architect. Clients and other heater builders regularly tell us our instruction sets are the clearest and most complete they have encountered anywhere in the industry.

What we do not include:

The kit does not include foundation work, which will need to be contracted locally. You will also need to supply 4 to 5.5 inches of solid masonry finishing material for the exterior of the heater. Common face brick, natural stone, or 3 to 4 inch solid concrete block finished with stucco or thin veneer real stone all work well. Manufactured concrete stone veneer is not suitable because it typically contains lightweight insulating aggregates. Chimney materials are not included in the heater core price, but we can supply all required Class A chimney materials for your build upon request.



Standard Firebox Sizes and Design/Venting Configurations

Standard Firebox Sizes

We offer three standard firebox widths, available in both Hybrid and Cast configurations and supporting all venting layouts, oven options, and bench configurations. We can also design and manufacture custom units with fireboxes up to 32" wide.

Model	Firebox (w x d)	Core Dims (w x d x h)	Finished w/ 4" veneer	Chimney	Heating Area*
SR-13	13" x 18"	36" x 23" x 74"	~43" x 32" x 80"	7" round	~1,200 sq ft
SR-18	17" x 18"	40" x 23" x 74"	~48" x 32" x 80"	8" ID round	~1,800 sq ft
SR-22	22" x 18"	45" x 23" x 74"	~53" x 32" x 80"	8" ID round	~2,000 sq ft

* Heating area assumes 8 ft ceilings and Energy Star rated construction. A heat loss calculation is recommended before selecting a model. Masonry heaters typically weigh between 6,000 and 12,000 pounds or more depending on configuration. Foundations must be engineered to carry this load.

Design/Venting Configurations

We select the design and venting configuration that best fits your project based on your floor plan, room layout, chimney placement, design aesthetics, and heating goals. You do not need to choose this yourself. Our SR designs and kits offer the widest range of design and venting options of any masonry heater kit available. Standard firebox sizes are the SR-13, SR-18, and SR-22, with custom designs available up to 32" wide. Adding a 3-sided heated bench and a side chimney connection will maximize the efficiency of all designs except the Swedish 5-Run, which uses left and right side bench extensions only due to its internal channeling layout.

Finnish Contraflow

Gases travel from the firebox through or around the oven and into a channel above the oven, then down both side channels evenly before venting into a heated bench or out a side chimney connection. This is a highly efficient design, and adding a 3-sided heated bench with a side chimney brings it to its highest efficiency.

Firebox sizes and notes: SR-13, SR-18, SR-22. Custom up to 32". Highest efficiency with 3-sided heated bench and side chimney.

J-Loop Design

Gases travel from the firebox, through or around the oven and into a channel above the oven. Then all the gases go down one side, under the firebox, up the opposite side and then vent out the top chamber. Adding a 3-sided heated bench brings the J-Loop to its highest efficiency. It is a strong, versatile performer across a wide range of floor plans.

Firebox sizes and notes: SR-13, SR-18, SR-22. Custom up to 32". Highest efficiency with 3-sided heated bench.

Swedish 5-Run Design

Gases travel from the firebox through or around the oven into a chamber above the oven, where they split and travel down channels on the front left and right sides, then back up channels on the back left and right sides into a top channel, exiting the chimney at the top of the heater or out the top back side. This is our most compact design and is highly efficient. The 5-Run can accommodate heated bench extensions on the left and right sides.

Firebox sizes and notes: SR-13, SR-18, SR-22. Custom up to 32". Top vented. Left and right bench extensions only.

Russian Bell Design

The Russian Bell is one of our most flexible design configurations because it is not limited by the channel design constraints of the other systems. Truly customizable in shape, the Bell chamber allows hot gases to rise and collect at the top before cooling and descending along the outer walls, producing very even and sustained heat output. One of the notable advantages of the Russian Bell is the ability to incorporate a black oven on the side of the heater, which is difficult to achieve in other designs. Adding a 3-sided heated bench brings the Russian Bell to its highest efficiency. Chimney venting can be arranged at the base or the top depending on the final design.

Firebox sizes and notes: SR-13, SR-18, SR-22. Custom up to 32". Base or top vented. Side black oven option available. Highest efficiency with 3-sided heated bench and side chimney.



Design/Venting Configurations (continued)

German and Austrian Calculated Heater Design (Kachelofen and Grundofen)

If precision and elegance are what you are after, the German and Austrian calculated heater designs may be your answer. Known as the Kachelofen and Grundofen, these are among the most refined masonry heater traditions in Europe, and for good reason: every channel, every dimension, every material is calculated for maximum thermal efficiency before a single brick is laid.

What sets these designs apart is their creative freedom. Because the calculations drive the engineering rather than a fixed channel layout, the shape of the heater can follow the architecture of the space rather than the other way around. Tall and narrow, low and wide, wrapped around a corner, built into a wall, finished in hand-painted antique tiles or smooth render: the Kachelofen and Grundofen lend themselves to forms that other heater types simply cannot achieve. Bake ovens are not typically incorporated into these designs, as the calculated channel system is optimized specifically for radiant heating efficiency.

These are the heaters you find in centuries-old European homes still warming families today. We bring that tradition to your project with full calculated design services.

Firebox sizes and notes: SR-13 through custom 32" wide. All venting configurations available depending on final calculated design.

Corner, Oval, and Round Draft Channel Options

All of our designs support the addition of corner and oval draft channels as well as fully round heater configurations. Corner channels allow the heater to wrap neatly into a room corner, making efficient use of space while adding to the visual presence of the unit. Oval and round heaters are among the most striking configurations we build, and they work with the Bell and calculated designs particularly well. These options are available across all firebox sizes from SR-13 through custom 32" units.

Custom Kachelofen and Kakelugn Tile Stove Building

We also offer custom tile stove building in both the German/Austrian Kachelofen tradition and the Swedish Kakelugn style. These are among the most beautiful heating objects ever designed, and we work with both new production tiles and antique tiles to achieve the look your project calls for. Whether you are restoring a historical home, designing a Scandinavian-influenced interior, or simply want a heater that is as much a piece of art as it is a heat source, a tile stove may be the right choice. Contact us to discuss tile options, design possibilities, and pricing.



Options: Bake Ovens and Heated Benches

Bake Oven Options

Both oven types are fully integrated into the heater core and use the same daily heating fire. No separate firing is needed. They differ in how they heat and how you use them day to day.

Black Oven: Direct Fire (Our Most Recommended)

Flames and hot combustion gases pass directly through the center of the oven chamber before entering the heat exchange channels. The oven reaches very high temperatures quickly. This is the oven we recommend most often.

Typical temperatures:

During fire: exceeds 1,000 F

2 hours after fire: ~650-700 F (pizza)

3 hours after fire: ~400-500 F (hearth bread)

8 or more hours after fire: ~350 F (slow roasting)

12 hours after a 65 lb fire: still near 250 F

A light gray fly ash settles in the oven and is swept into the firebox before baking. This is quick and simple, and is part of the traditional wood-fired oven experience.

White Oven: Indirect Fire

Hot gases travel around the outside of the oven chamber rather than through it. The oven interior stays completely clean with no ash or soot. The oven floor is a 2" cast refractory slab.

Typical temperatures:

1 fire per day: 250-350 F

2 fires per day: 500-600 F

Ideal for roasting, casseroles, slow baking, along with breads and pizza on 2 fires per day.

Always clean: no ash management needed

The white oven delivers gentler, more consistent heat with a completely clean baking surface every time. If you want clean and simple with no ash handling, this is the better fit.

Heated Bench Options

We design heated benches into approximately 85 percent of our heaters. A heated bench is one of the most practical and comfortable additions to a masonry heater. The bench becomes part of the heater's thermal mass: additional gas channels run through the bench, slowing exhaust gases and extracting more heat from the same fire. Every bench side you add increases channel length, heat storage, and overall efficiency.

Depending on chimney height and overall design, we can heat up to four sides of the bench. Bench surface temperatures typically run 100 to 140 F, warm enough for comfortable seating, lounging, or therapeutic use. Bench surfaces can be finished in stone, brick, tile, soapstone, or concrete. Our heated bench cores are built primarily with cast refractory. For those working with a tighter budget, we also have plans that allow the bench core to be cut from 8x12" ID clay tile.

Heated bench pricing: \$250 per linear foot.



Domestic Hot Water Loop

A domestic hot water loop can be added to a masonry heater firebox. A stainless steel heat exchanger coil installed in the firebox captures heat during firing and contributes to preheating your domestic hot water supply, reducing reliance on your electric or gas water heater during the heating season.

Our role is limited to cutting the necessary openings in the firebox for the loop. We do not design or install the hot water system itself. All domestic hot water systems must be engineered and installed by a licensed steam fitter. Improper design can result in dangerous steam pressure conditions.

One important note on hydronic floor heating: a masonry heater will not adequately drive a glycol in-floor radiant system as a primary heat source. The heater itself already delivers the gentle, even, radiant warmth that in-floor systems are typically chosen for. A hot water loop through the firebox is appropriate for domestic hot water preheating only, not as a driver for a floor heating system.



Specifications and Dimensions

All dimensions below are for standard Hybrid and Cast units. Finished dimensions include a 4" masonry veneer on all sides. Heat output figures assume properly seasoned cordwood at less than 20 percent moisture content.

SR-13: Hybrid and Cast

Core dimensions	36" w x 23" d x 74" h
Finished dimensions	~43" w x 32" d x 80" h
Firebox	13" w x 18" d
Black oven	18" w x 18" d with 3.5" channel in center
White oven	18" w x 15" d
Chimney	7" ID round flue or 8x12" OD clay tile equivalent
Fuel load	35 lbs per fire, every 8 hours maximum
Heat output (1 fire)	~183,750 Btu per fire / ~7,650 Btu per hour over 24 hours
Heat output (2 fires)	~367,500 Btu over 24 hours / ~15,300 Btu per hour (2 fires per day)
Heating area	~1,000 sq ft with 8 ft ceilings and Energy Star rating

SR-18: Hybrid and Cast

Core dimensions	40" w x 23" d x 74" h
Finished dimensions	~48" w x 32" d x 80" h
Firebox	17" w x 18" d
Black oven	22" w x 18" d with 4" channel in center
White oven	22" w x 15" d
Chimney	8" ID round flue or 8x12" ID clay tile equivalent
Fuel load	60 lbs per fire, every 8 hours maximum
Heat output (1 fire)	~327,000 Btu per fire / ~13,650 Btu per hour over 24 hours
Heat output (2 fires)	~655,200 Btu over 24 hours / ~27,300 Btu per hour (2 fires per day)
Heating area	~1,800 sq ft with 8 ft ceilings and Energy Star rating

SR-22: Hybrid and Cast

Core dimensions	45" w x 23" d x 74" h
Finished dimensions	~53" w x 32" d x 80" h
Firebox	22" w x 18" d
Black oven	27" w x 18" d with 4.5" channel in center
White oven	27" w x 15" d
Chimney	8" ID round flue or 8x12" ID clay tile equivalent
Fuel load	65 lbs per fire, every 8 hours maximum
Heat output (1 fire)	~341,000 Btu per fire / ~14,220 Btu per hour over 24 hours
Heat output (2 fires)	~682,000 Btu over 24 hours / ~28,416 Btu per hour (2 fires per day)
Heating area	~2,000 sq ft with 8 ft ceilings and Energy Star rating



2026 Pricing: SR Core Kits

Prices below are for the kit only: all materials, SR doors, and full drawing package. Installation is quoted separately. Design services with 2D SketchUp blueprints, course-by-course PDF drawings, 3D elevations, and custom facade designs through our AIA-certified architect are available from \$200 to \$1,500 depending on scope.

SR Hybrid Core Systems

The Hybrid kit uses approximately 230 firebricks with 18 cast refractory slabs. More economical kit cost with additional build time.

Model	Configuration	Price
SR-13H	No oven	\$7,016
SR-13HBO	With black oven	\$8,175
SR-13HWO	With white oven	\$8,465
SR-18H	No oven	\$8,769
SR-18HBO	With black oven	\$10,073
SR-18HWO	With white oven	\$10,363
SR-22H	No oven	\$9,204
SR-22HBO	With black oven	\$10,508
SR-22HWO	With white oven	\$10,798

SR Cast Core Systems

The Cast Core uses approximately 40 firebricks with 55 precision refractory castings. Faster to build with minimal cutting. Higher kit cost, lower labor time.

Model	Configuration	Price
SR-13C	No oven	\$9,157
SR-13CBO	With black oven	\$10,600
SR-13CWO	With white oven	\$10,756
SR-18C	No oven	\$11,805
SR-18CBO	With black oven	\$12,050
SR-18CWO	With white oven	\$12,437
SR-22C	No oven	\$12,614
SR-22CBO	With black oven	\$13,314
SR-22CWO	With white oven	\$13,612



Masonry Heater Cook Stove Combination Units

The masonry heater cook stove combination is one of the most practical and self-sufficient heating and cooking solutions we build. A steel cook top is integrated above the firebox, using the same fire that heats your home to also heat your cooktop surface. The unit uses Russian Bell channeling on the side of the heater, which allows the cook top to sit naturally above the firebox without interfering with the heat exchange system.

These units were built for off-grid homes, cabins, and anyone who wants a single fire to handle both heating and cooking. The cook top can reach cooking temperatures quickly and hold heat for extended periods throughout the fire cycle. Bake oven and heated bench options can be incorporated into the combination design, making this one of the most versatile configurations we offer.

Every combination unit ships with all required materials: firebrick, refractory castings, refractory mortar, gaskets, insulation, ceramic wool, fiberglass expansion material, SR firebox door, and cleanout door. Full course-by-course drawings and instructions are included. The firebox liner is replaceable in accordance with IRC and ASTM E1602 standards.

SR-13 Masonry Heater Cook Stove Combination

Core dimensions	23" d x 50.5" l x ~36" h @ cooktop and 55" @ side bell
Finished w/ 4" veneer	~31" d x ~58" l x ~44" h @ cook top and 60" @ side bell
Firebox	13" w x 18" d
Cook top	Steel cook top integrated above firebox
Chimney	6-7" ID round flue or equivalent
Fuel load	35 lbs per fire, every 8 hours maximum
Heat output (1 fire)	~183,750 Btu per fire / ~7,650 Btu per hour over 24 hours
Heat output (2 fires)	~367,500 Btu over 24 hours / ~15,300 Btu per hour (2 fires per day)
Heating area	~700-1,000 sq ft with 8 ft ceilings and Energy Star rating
Options	Bake oven on side bell and heated bench configurations available

SR-18 Masonry Heater Cook Stove Combination

Core dimensions	23" d x ~58" l x ~36" h @ cooktop and 55" @ side bell
Finished w/ 4" veneer	~40" w x 24" d x 32" h @ cook top and 60" @ side bell
Firebox	17" w x 18" d
Cook top	Steel cook top integrated above firebox
Chimney	7-8" ID round flue or equivalent
Fuel load	60 lbs per fire, every 8 hours maximum
Heat output (1 fire)	~327,000 Btu per fire / ~13,650 Btu per hour over 24 hours

Heat output (2 fires)	~655,200 Btu over 24 hours / ~27,300 Btu per hour (2 fires per day)
Heating area	~1,200-1,800 sq ft with 8 ft ceilings and Energy Star rating
Options	Bake oven on side bell and heated bench configurations available

Masonry Heater Cook Stove Combination Pricing

Model	Configuration	Price
SR-13HCH	SR-13 Hybrid with cook top	\$7,016
SR-13HCH-BO	SR-13 Hybrid with cook top and oven	\$8,216
SR-18HCH	SR-18 Hybrid with cook top	\$8,769
SR-18HCH-BO	SR-18 Hybrid with cook top and oven	\$9,969

Custom sizes and configurations available. Contact us to discuss your project requirements.



Masonry Cook Stoves

A standalone masonry cook stove is built purely for cooking, offering the thermal mass and heat retention of masonry with the functionality of a cook stove. Unlike a sheet metal wood stove, a masonry cook stove absorbs and radiates heat evenly across the cook surface, holds temperature far longer after the fire dies down, and provides a dramatically more stable cooking environment.

Our masonry cook stoves are built to order with a steel cook top surface, integrated firebox, and a replaceable cast refractory firebox liner. They are designed for daily use and built to last generations. The units can also contribute meaningful supplemental radiant heat to smaller spaces under 600 square feet, making them particularly well suited to cabins, small homes, and off-grid applications.

A full-size bake oven can be added for homes that want both reliable cooking and baking capability in a single unit. Contact us to discuss oven options and sizing.

SR-31x33HCS Masonry Cook Stove (our smallest standard model)

Dimensions	31" w x 33" h (core, before veneer)
Firebox	Replaceable firebrick liner
Cook top	Steel cook top surface
Chimney	6-7" ID round flue or equivalent
Best application	Primary cooking, supplemental heat for spaces under 600 sq ft
Options	No oven option available. Heated bench optional

SR-24x40 Masonry Cook Stove

A top-vented masonry heating and cooking system with a replaceable firebrick firebox and castable refractory slabs. The 24" x 40" steel cook top provides a generous cooking surface, and the unit delivers meaningful supplemental radiant heat in addition to its primary cooking function.

Finished dimensions	40" w x 24" d x 32" h with ~4" masonry veneer
Firebox	Replaceable firebrick firebox with castable refractory slabs
Cook top	24" x 40" steel cook top surface
Firebox door	SR-9 rectangular firebox door
Chimney	6-7" ID round flue or equivalent (provided and installed by others)
Kit includes	Cast refractory slabs, firebrick, SR-9 firebox door, 24x40" steel cook top, cleanout door, grate, fiberglass expansion joint, mineral wool gasketing, refractory mortar
Standards	Must be built in accordance with IRC and ASTM E1602

Masonry Cook Stove Pricing

Model	Configuration	Price
SR-31x33HCS	Masonry cook stove	\$4,800
SR-31x33HCS-BO	With black bake oven	\$6,000
SR-24x40	24x40 top-vented cook stove	\$5,650
SR-24x40-BO	With black bake oven	\$6,850

Every cook stove kit includes all required materials: firebrick, refractory castings, refractory mortar, gaskets, insulation, ceramic wool, fiberglass expansion material, SR firebox door, and cleanout door, along with complete course-by-course drawings and instructions. Custom sizes and cast refractory models upon request.



SR Doors: 2026 Pricing

All SR doors are fabricated in Duluth, MN using North American refractories and steel and pyroceramic glass sourced from Germany, fully gasketed. SR firebox doors include an air frame that supplies 100 percent of required combustion air for your firebox size, with the proper ratio of preheated underfire and overfire air for clean combustion, plus an air wash to keep the glass clean. We can build custom doors of any size for masonry heaters, bake ovens, cook stoves, fireplaces, and commercial wood-fired ovens. Allow 6-8 weeks lead time on all door orders.

Firebox Doors

Specify 4" or 5" deep air frame for brick or stone.

Model	Glass Size	Masonry Frame Size	Price
SR-13FB	13.25" w x 18.75" h	18.75" w x 26.25" h	\$1,622
SR-16FB	16.25" w x 18.75" h	21.75" w x 26.25" h	\$1,751
SR-18FB	18.25" w x 18.75" h	23.75" w x 26.25" h	\$1,861
SR-22FB	22.25" w x 18.75" h	27.75" w x 26.25" h	\$2,008
SR-24FB	24.25" w x 18.75" h	29.75" w x 26.25" h	\$2,153
SR-28FB	28.25" w x 18.75" h	33.75" w x 26.25" h	\$2,607
SR-32FB	32.25" w x 18.75" h	37.75" w x 26.25" h	\$2,901

For arched top (rectangular glass) doors: add \$135 per door.

Bake Oven Doors

Model	Masonry Frame Size	Price
SR-13BO	14.5" w x 10.5" h	\$1,024
SR-18BO	19.5" w x 10.5" h	\$1,078
SR-22BO	23.5" w x 10.5" h	\$1,208

Black Bake Oven Doors

With combustion air supply. Can be used for a masonry heater black oven or a wood-fired oven.

Model	Masonry Frame Size	Price
SR-13BBO	14.5" w x 10.5" h	\$1,189
SR-18BBO	19.5" w x 10.5" h	\$1,282
SR-22BBO	23.5" w x 10.5" h	\$1,373



Cleanout and Ash Doors: 2026 Pricing

Model	Description	Outside Dim	Inside Dim	Price
SR-CO	Gasketed Cleanout Door with 4" deep air frame	5.5" x 5.5"	5" x 5"	\$143
SR-A	Gasketed Ash Door	8" x 12"	5" x 9"	\$315



Shipping and Services

We ship from Duluth, MN to all regions of the United States and Canada. Kit pallets typically weigh up to 2,000 lbs each and ship by freight. Canadian orders will require customs importing and GST taxes in addition to shipping costs. Three standard delivery options are available:

Shipping to a Local Business or Hardware Store (Preferred Method)

If you have a local hardware store, lumber yard, or other business with a forklift and standard business hours, we can ship directly there. This is our preferred delivery method and is typically the most cost-effective option. You would need to contact them first to confirm they will accept the freight. We will need the business address, contact name, hours of operation, and whether they have a forklift or loading dock.

Shipping to a Local Truck Transfer Station

We ship the pallets to a freight transfer station near you, and you pick them up with a truck and trailer. Our shipping company will locate a transfer station within approximately one hour of your location.

Shipping to Your Home

If you have a forklift or a tractor capable of lifting a 2,000 lb pallet from a semi-truck, we can ship directly to your property. Liftgate trucks cost significantly more and typically cannot handle 2,000 lb pallets, so they are generally not a workable option.

Shipping costs are calculated per order based on destination and pallet count. Contact us for a shipping estimate when requesting a kit quote.

Chimney Materials and Supplies

We can order and ship all specialty chimney materials for your project, including flue liners, chimney connectors, and related components. If you would like us to source and ship your chimney materials along with your kit, let us know when you request your quote and we will include pricing.

How to Get Started

1. Reach out with your project details

Tell us about your home: square footage, ceiling height, construction type, location, and what you are hoping to heat. If you have floor plans, send them along. We can help identify the right model and configuration for your layout.

2. Review your quote

We will put together a detailed quote covering the kit, any options, and shipping. Installation pricing is quoted separately for traveled jobs.

3. Order and get building

Once the order is confirmed, your kit goes into production. Lead times vary by season. Ask us for current lead times when you inquire.

Solid Rock Masonry Heat

Eric Moshier | Third-Generation Mason | In Business Since 2003

Fully Insured Including Errors and Omissions Coverage for Design and Manufacturing

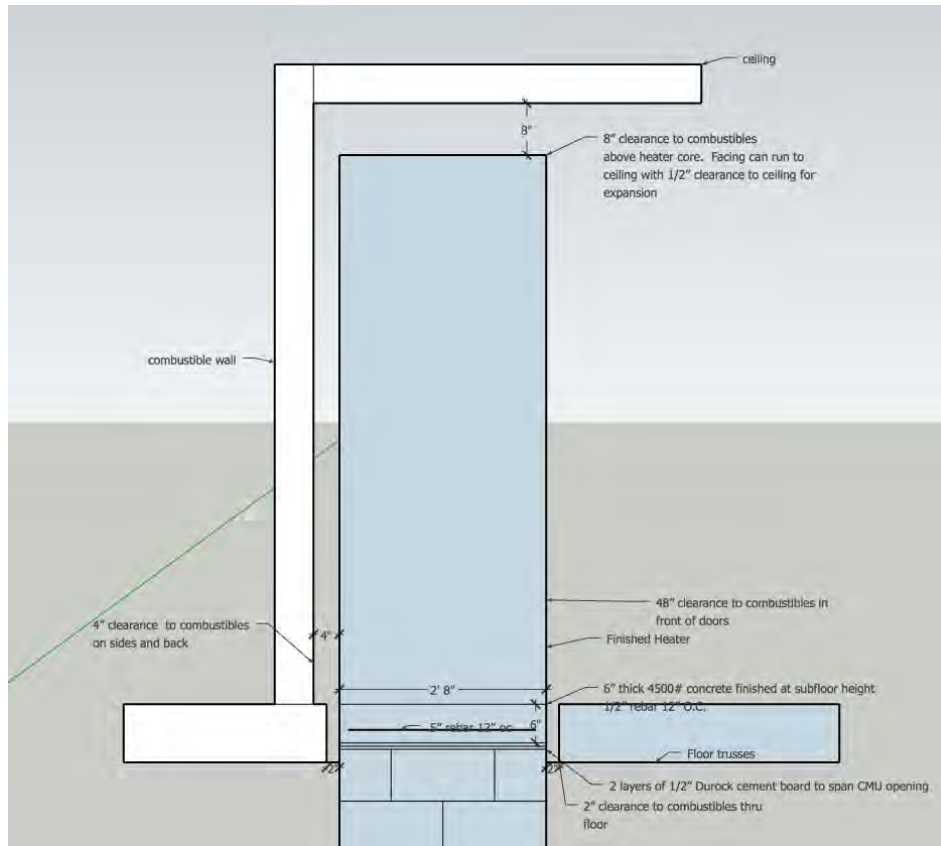
218-343-2978 | eric@solidrockmasonry.com | solidrockmasonry.com

5347 Howard Gnesen Road, Duluth, MN 55803

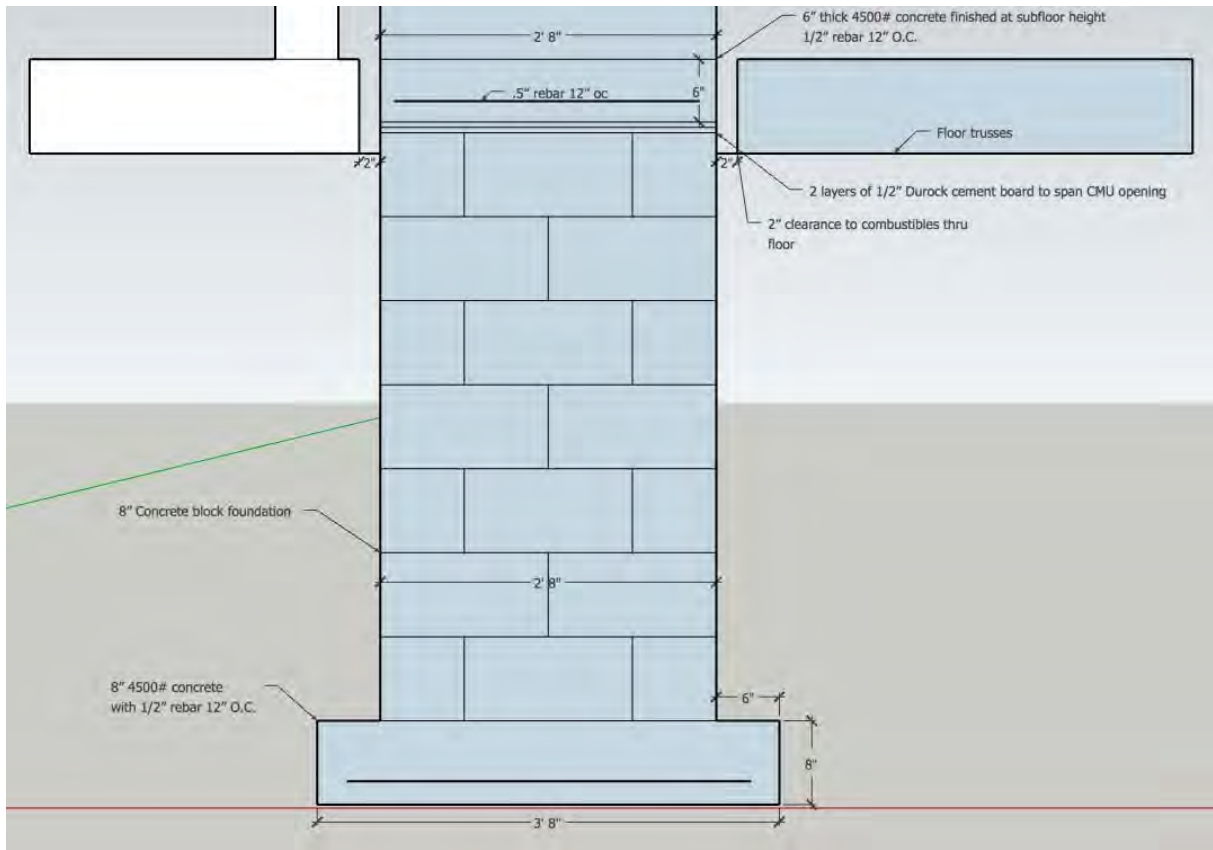


Foundation and Clearance Requirements

The following diagrams show our standard generic foundation specifications and clearance-to-combustibles requirements for masonry heater installations. Your local building department may have additional requirements. Always consult with your contractor and building official before construction.



Clearances to Combustibles: sides, back, front of doors, and ceiling



Foundation Detail: concrete footing and CMU block foundation